



**LA MECÀNICA**

**YET ANOTHER FLEETING HOUR**

**(Encore une heure si courte) Technical Rider**

**GENERAL INFO**

**Length of show** 70 mins  
**Interval** No interval  
**Audience** All ages 7+  
**Touring party** 5 people on tour

**BUMP IN**

**Pre-arrival** Dance floor laid out and pre-rig (if pre-rig is not possible, contact company technician)  
**Day of perf.** Bump in, performance and bump out

Morning	Lunch	Afternoon	Break	Show	Bump Out
4h	1h	4h	1h	1h10m	1h30m
Unload / mark up 1h		Plotting / sound check 2h	Company warm up during Tech break	<b>SHOW</b> 1 x Lx/Snd Tech	1 x Lx/Snd Tech 2 x Mechs
2 x Mechs		1 x Lx/Snd Tech			
Lx Focus / set bump in 3h		Tech Run 2.30h			
2 x Lx Tech		1 x Lx/Snd Tech and cleaning of the floor			

**SUGGESTED SCHEDULE**

Morning	4h	09.00 – 13.00
Lunch		13.00 – 14.00
Afternoon	4h30m	14.00 – 18.30
Break		18.30 – 19.30
Show call		19.30
<b>Show</b>	<b>1h10m</b>	<b>20.00 – 21.10</b>
Bump out	1h30m	21.15 – 22.45

**STAFFING REQUIREMENTS**

09.00 – 10.00	2 x Mechs
10.00 – 13.00	2 x Lx Tech
14.00 – 18.30	1 x Lx/Snd Tech
19.30 – 22.45	1 x Lx/Snd Tech
21.15 – 22.45	2 x Mechs

**STAGE**

- **Dance floor to be pre-laid before performance day is essential**
- Proscenium stage
- Black dance floor
- Optimum stage dimensions: 10m wide x 9m deep
- Minimum stage dimensions: 9m wide x 7m deep
- 5 legs at each side, minimum 1.5m offstage on each side
- The House Curtain is used
- A separate room for the warm up of the performers is appreciated



**LA MECÀNICA**

## LIGHTING

- **A Pre-rig before performance day is essential**
- 42 x 2k Dimmers (DMX or DMUX)
- 6 x 1k 22/40° profiles or 750W 25/50° profiles
- 5 x 1k 13/28° profiles or 750W 15/30° profiles
- 3 x 2k PC
- 26 x 1k PC with barn doors
- 21 x PAR 64 CP-62
- 1 x PAR 64 CP-61
- 8 x ladders or booms for sidelights, minimum 2m tall each

**LA MECÀNICA**  
**Yet Another Fleeting Hour**  
 (Encore Une Heure Si Courte)

LiGHT PLOT  
 v.3 03/05/2017

light design ETIENNE DOUSSELIN  
 this version MANU MARTINEZ

contact  
 tech@lamecanica.org

42 DIMMERS x 2 Kw

6 PROFILE 22/44° 1 Kw o 25/50° 750/800 W

5 PROFILE 13/28° 1 Kw o 15/30° 750/800 W

3 PC 2 kw

26 PC 1 Kw

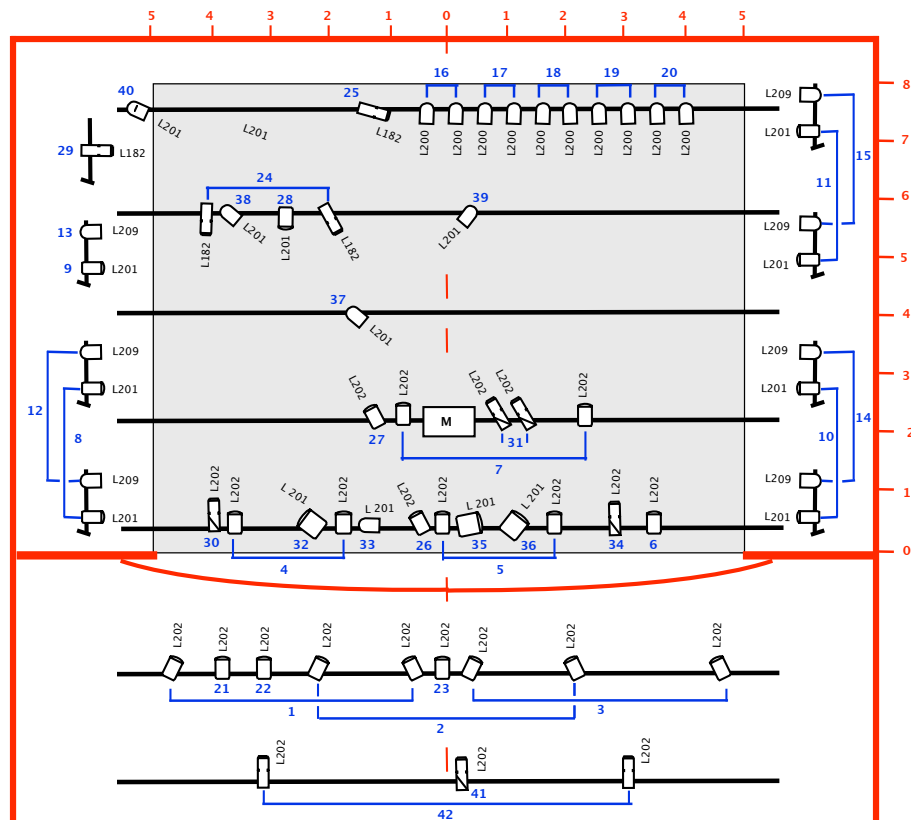
21 PAR 64 CP-62 (MEDIUM FLOOD)

1 PAR 64 CP-61 (NARROW SPOT)

8 BOOM  
 \_ 2 mt  
 \_ 1 mt  
 \_ 0,3 mt

10 x 8 mts BLACK DANCEFLOOR

COMPANY EQUIPMENT  
 M PAPER SHOWER MECHANISM



## SPECIAL EFFECT

The company brings a mechanism to do a shower of papers at a certain point towards the end of the show, which will be manually operated by a member of the company. The mechanism is 100 cm x 40cm x 30 cm and it is rigged on LX2 with two hook clamps (already attached to the mechanism) and with security chains.



**LA MECÀNICA**


## SOUND

- Mixing desk with 7 channels:
  - 1 PA L
  - 2 PA R
  - 3 Monitor L
  - 4 Monitor R
  - 5-7 Ambient Mics
- Power amp and PA system suitable to the space
- 3 Ambient mics (Ideally Crown PCC or Senheiser 416), two to be placed on the floor as per plan, only if the space requires them due to size.
- 2 x onstage monitors (to be placed on both upstage corners, ideally on 1.5m stands)
- Company brings laptop to operate the sound from QLab

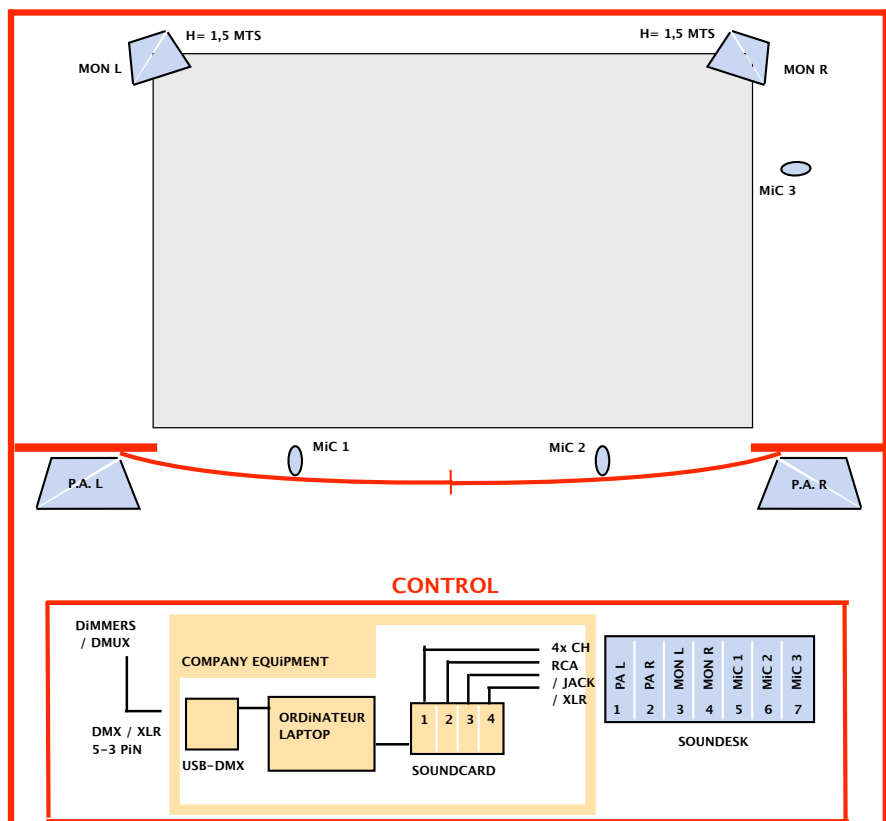
**LA MECÀNICA**  
**Yet Another Fleeting Hour**  
(Encore Une Heure Si Courte)

SOUND AND CONTROL

contact  
tech@lamecanica.org



**SOUND**  
- SOUNDESK WITH 7 CHANNELS  
- P.A. ACCORDING TO VENUE'S SIZE  
- 2 STAGE MONITORS OVER 1,5 MTS STAND  
- 3 AMBIENCE MICS ON THE FLOOR  
(CROWN PCC, SENHEISER 416...)



## DRESSING ROOMS

- For 3 performers
- Iron and ironing board
- If more than one performance, then laundry facilities
- Showers and towels
- Hospitality: water. Tea and coffee, juices and fruit would be much appreciated



**LA MECÀNICA**

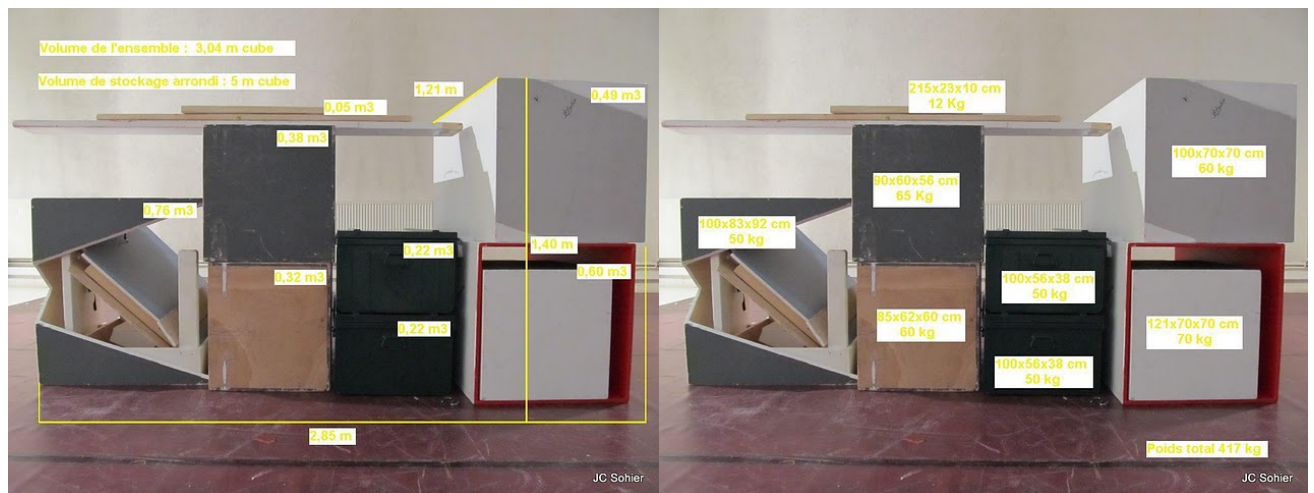
### TRANSPORT AND FREIGHT INFORMATION

For performances in Europe, the set can travel in the company van, which measures 5,5m long x 1,21m wide x 2,8m high

For locations that will require freight:

Total max volume: 5m<sup>2</sup>

Total weight: 417 kg



### TECH CONTACT

Manu Martínez | +34 654 647 339 | [tech@lamecanica.org](mailto:tech@lamecanica.org)